



India Meteorological Department

(Ministry of Earth Sciences)

NATIONAL BULLETIN NO.: 11 (BOB/03/2023)

TIME OF ISSUE: 0830 HOURS IST

DATED: 03.08.2023

FROM: INDIA METEOROLOGICAL DEPARTMENT (FAX NO. 24643965/24699216/24623220)

TO: CONTROL ROOM, NDM, MINISTRY OF HOME AFFAIRS (FAX.NO. 23093750)

CONTROL ROOM NDMA (FAX.NO. 26701729)

CABINET SECRETARIAT (FAX.NO.23012284, 23018638)

PS TO HON'BLE MINISTER FOR S & T AND EARTH SCIENCES (FAX NO.23316745)

SECRETARY, MOES (FAX NO. 24629777)

H.Q. (INTEGRATED DEFENCE STAFF AND CDS) (FAX NO. 23005137/23005147)

DIRECTOR GENERAL, DOORDARSHAN (23385843)

DIRECTOR GENERAL, AIR (23421105, 23421219)

PIB MOES (FAX NO. 23389042)

UNI (FAX NO. 23355841)

D.G. NATIONAL DISASTER RESPONSE FORCE (NDRF) (FAX NO. 26105912, 2436 3260)

DIRECTOR, PUNCTUALITY, INDIAN RAILWAYS (FAX NO. 23388503)

CHIEF SECRETARY, MADHYA PRADESH (FAX NO. 0755-2441076)

CHIEF SECRETARY, UTTAR PRADESH (FAX NO. 0522-2289212)

CHIEF SECRETARY, CHHATTISGARH (FAX NO. 0771-2221206)

CHIEF SECRETARY, JHARKHAND (FAX NO. 0651-2400255)

CHIEF SECRETARY, ODISHA (FAX NO. 0674-2536660)

Sub: Depression over north Chhattisgarh & neighbourhood

The Depression over Jharkhand and adjoining north Chhattisgarh moved west-northwestwards with a speed of 12 kmph during past 6 hours and lay centred at 0530 hours IST of 03rd August, 2023 over north Chhattisgarh and neighbourhood near latitude 23.4°N and longitude 83.4°E, about 40 km north-northeast of Ambikapur (Chhattisgarh) and 190 km east-southeast of Sidhi (East Madhya Pradesh).

It is likely to move west-northwestwards towards northeast Madhya Pradesh and adjoining southeast Uttar Pradesh and weaken into a Well Marked Low Pressure Area during next 12 hours.

Warnings:

(i) Rainfall warning:

East Madhya Pradesh: Light to moderate rainfall at most places with heavy to very heavy rainfall at a few places on 3rd & 4th and isolated extremely heavy rainfall on 3rd August. Heavy rainfall at isolated places is likely on 5th August.

West Madhya Pradesh: Light to moderate rainfall at most places with heavy to extremely heavy rainfall at isolated places on 3rd August. Heavy rainfall at isolated places is likely on 4th August.

East Uttar Pradesh: Light to moderate rainfall at most places with isolated heavy to very heavy rainfall on 3rd August and isolated heavy rainfall during 4th to 6th August.

West Uttar Pradesh: Light to moderate rainfall at most places with isolated heavy rainfall on 3rd August.

Vidharbha: Light to moderate rainfall at most places with isolated heavy rainfall on 3rd August.

Spatial rainfall distribution: Isolated: <25%, A few: 26-50%, Many: 51-75%, Most: 76-100%

Rainfall amount (mm): Heavy rain: 64.5 – 115.5, Very heavy rain: 115.6 – 204.4, Extremely heavy rain: 204.5 or more.

Chhattisgarh: Light to moderate rainfall at most places with isolated heavy to very heavy rainfall over Chhattisgarh on 3rd and heavy rainfall at isolated places on 4th August.

(v) Damage Expected over Jharkhand, north Chhattisgarh, east Madhya Pradesh and east Uttar Pradesh

- Minor damage to loose / unsecured structures.
- Some breaches in Kutcha road due to flooding.
- Damage to standing agriculture & horticulture crops.
- Minor damage to Kutcha embankments.

The next bulletin will be issued at 1130 hrs IST of 3rd August, 2023.

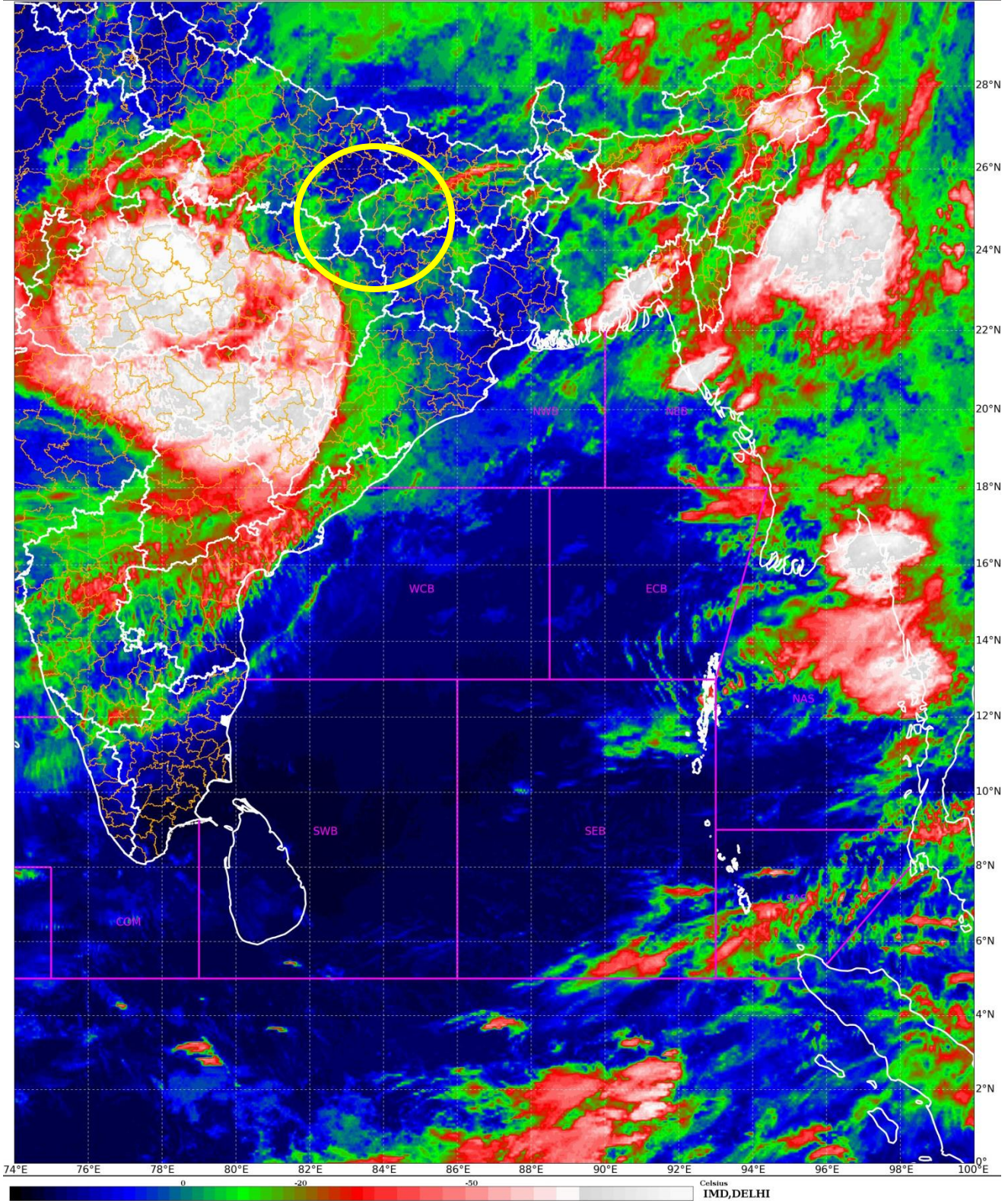
(S. P. Singh)
Scientist-C, RSMC, New Delhi

Copy to: CRS, Pune/ACWC Kolkata/Chennai/CWC Bhubaneswar/CWC Visakhapatnam/MO Port Blair

Depression (23.4°N, 83.4°E)

SAT : INSAT-3D IMG
IMG_TIR1_TEMP 10.8 um
LIC Mercator

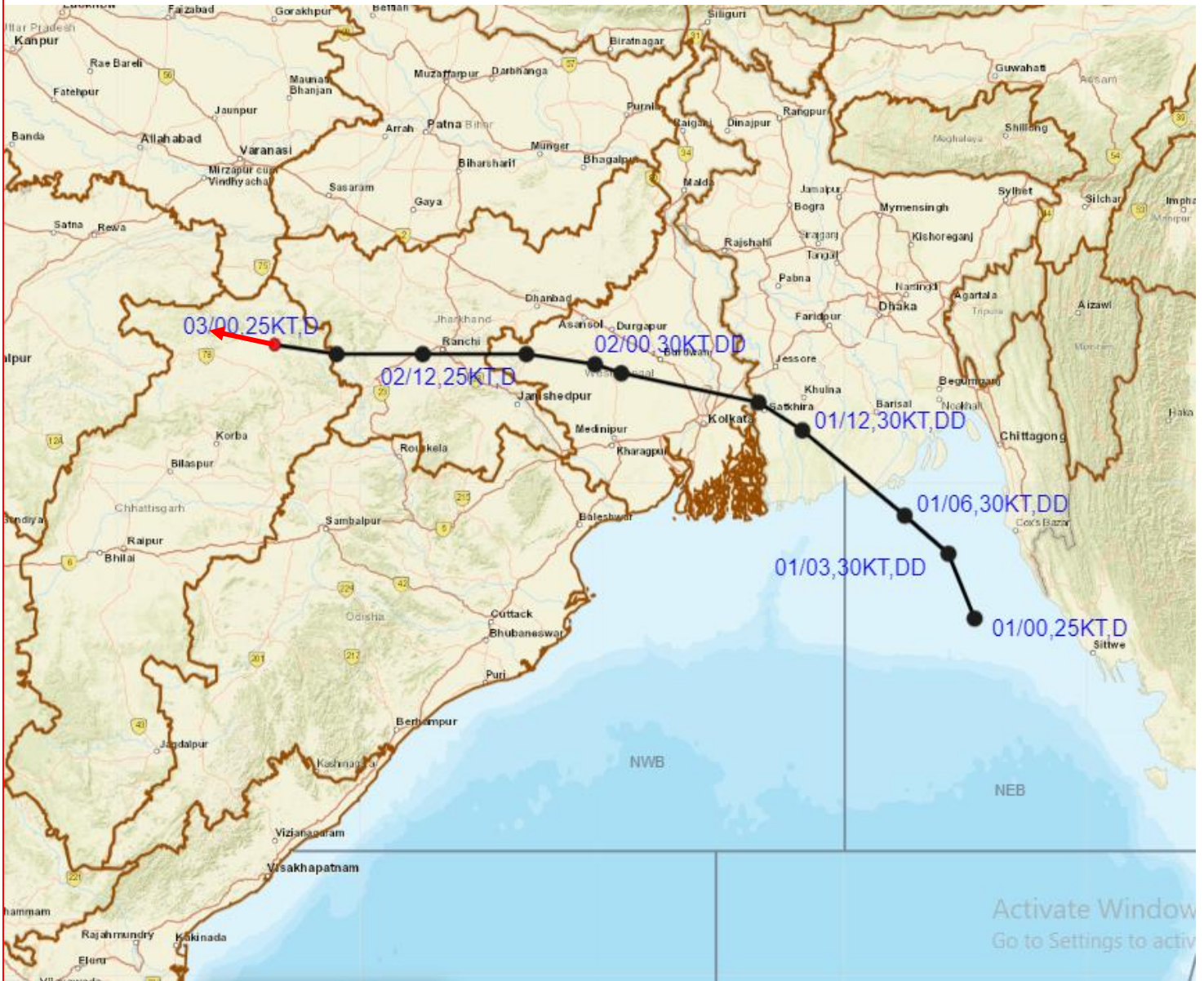
03-08-2023/(0130 to 0156) GMT
03-08-2023/(0700 to 0726) IST



Spatial rainfall distribution: Isolated: <25%, A few: 26-50%, Many: 51-75%, Most: 76-100%
Rainfall amount (mm): Heavy rain: 64.5 – 115.5, Very heavy rain: 115.6 – 204.4, Extremely heavy rain: 204.5 or more.



OBSERVED AND FORECAST TRACK OF DEPRESSION OVER NORTH CHHATTISGARH & NEIGHBOURHOOD BASED ON 0000 UTC (0530 IST) OF 03RD AUGUST 2023.



DATE/TIME IN UTC

IST=UTC + 0530

L: LOW PRESSURE AREA

WML: WELL MARKED LOW PRESSURE AREA

D: DEPRESSION (17-27 KT)

DD: DEEP DEPRESSION (28-33 KT)

CS: CYCLONIC STORM (34-47 KT)

SCS: SEVERE CYCLONIC STORM (48-63KT)

VSCS: VERY SEVERE CYCLONIC STORM (64-89 KT)

ESCS: EXTREMELY SEVERE CYCLONIC STORM (90-119 KT)

SuCS: SUPER CYCLONIC STORM (≥ 120 KT)

● LESS THAN 34 KT

⊙ 34-47 KT

⊙ ≥ 48 KT

█ OBSERVED TRACK

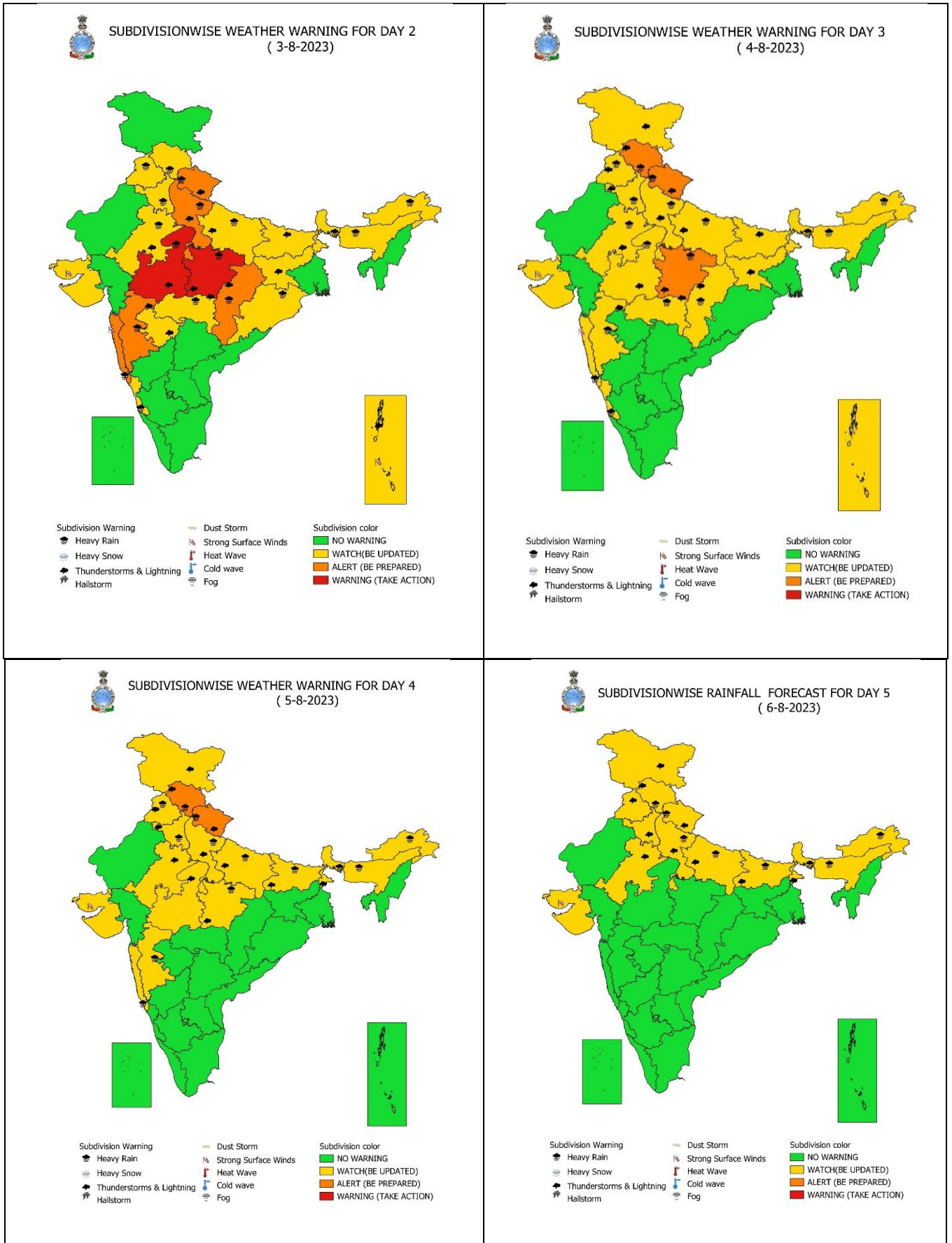
█ FORECAST TRACK

▲ CONE OF UNCERTAINTY

Spatial rainfall distribution: Isolated: <25%, A few: 26-50%, Many: 51-75%, Most: 76-100%

Rainfall amount (mm): Heavy rain: 64.5 – 115.5, Very heavy rain: 115.6 – 204.4, Extremely heavy rain: 204.5 or more.

Weather Warning Graphics



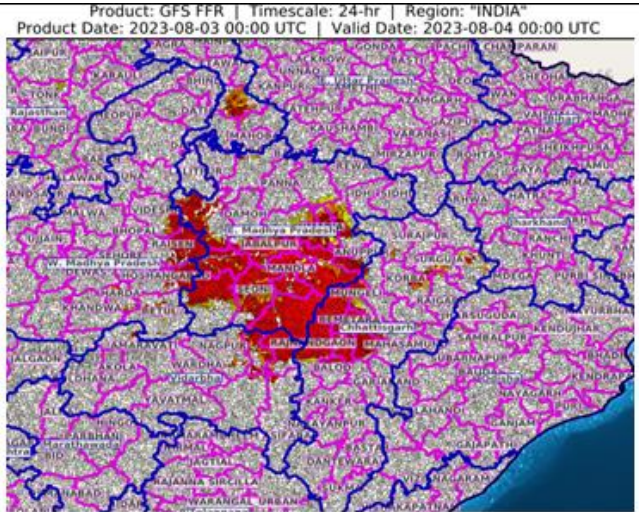
Spatial rainfall distribution: Isolated: <25%, A few: 26-50%, Many: 51-75%, Most: 76-100%
Rainfall amount (mm): Heavy rain: 64.5 – 115.5, Very heavy rain: 115.6 – 204.4, Extremely heavy rain: 204.5 or more.

Flash Flood Guidance

24 hours Outlook for the Flash Flood Risk (FFR) till 0530 IST of 04-08-2023 :

Moderate flash flood risk likely over few watersheds & neighbourhoods of **Chhattisgarh, East Madhya Pradesh, Vidarbha, West Madhya Pradesh and Odisha** Met Sub-divisions during next 24 hours.

Surface runoff/ Inundation may occur at some fully saturated soils & low-lying areas over AoC as shown in map due to expected rainfall occurrence in next 24 hours.



Flash Flood Threat	Flash Flood Risk
 High Threat (Take Action)	 High Risk (Take Action)
 Moderate threat (Be Prepared)	 Moderate Risk (Be Prepared)
 Low Threat (Be Updated)	 Low Risk (Be Updated)

Spatial rainfall distribution: Isolated: <25%, A few: 26-50%, Many: 51-75%, Most: 76-100%
 Rainfall amount (mm): Heavy rain: 64.5 – 115.5, Very heavy rain: 115.6 – 204.4, Extremely heavy rain: 204.5 or more.